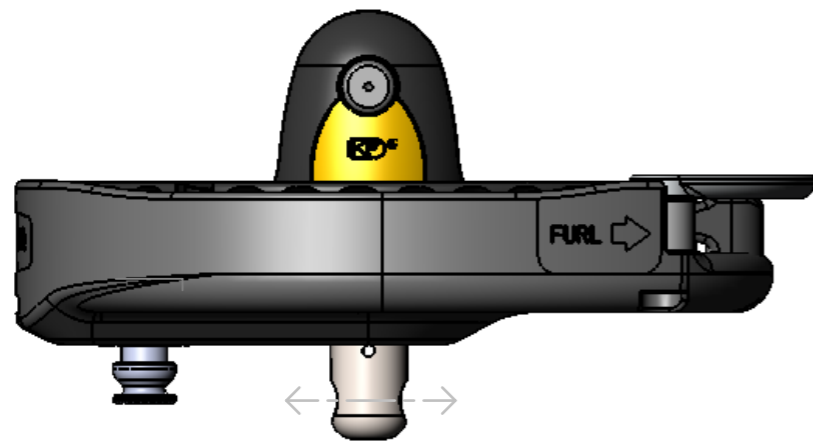


STANDARD PIN HOLE
"SIDEWAYS"

- A -

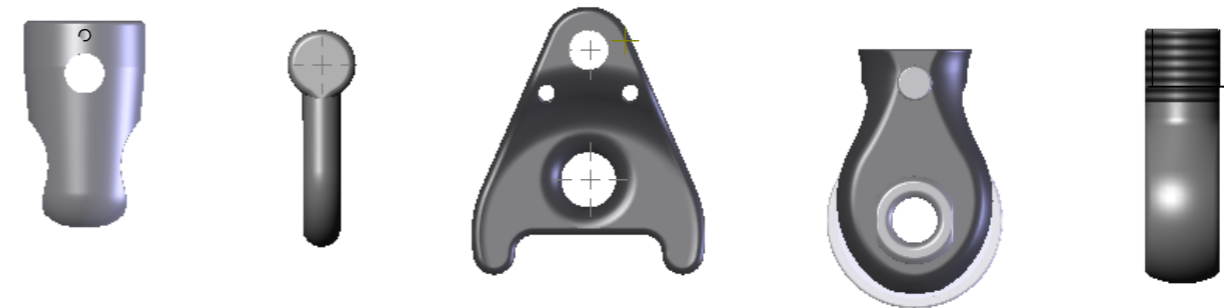
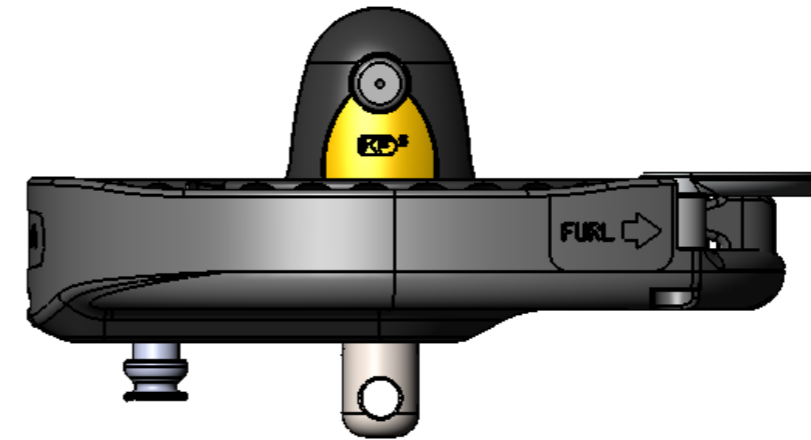
ORIENTATION STANDARD
"DANS L'AXE"



ORIENTATION 90°
FROM STANDARD
"FORE-AFT"

- B -

ORIENTATION 90°
"PERPENDICULAIRE"



*Hole position can be modified by following user's manual instruction
La position de l'œil peut être modifiée en suivant les instructions du manuel d'utilisation*