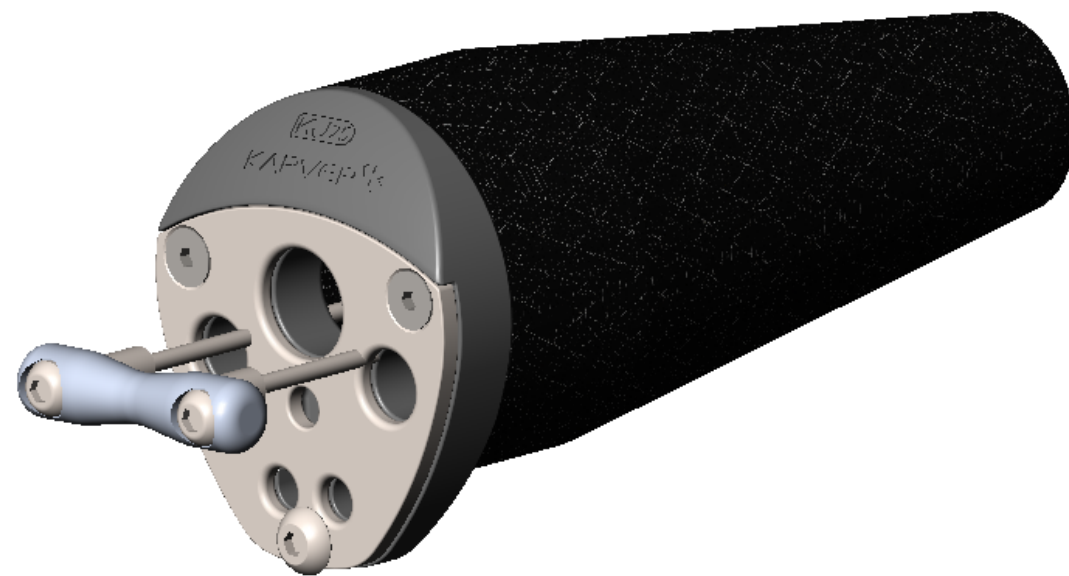


Screw for servicing



**KJ25 CARBON JAMMER**  
**ROPE DIAMETER 10 to 14mm**  
**MAX WORKING LOAD 3T**  
**WEIGHT: 325g**

DATE	MODIFICATIONS APORTEES	NOM	VISA	IND.
MATIERE ET ETAT	TOLERANCE GENERALE	EVOLUTION DU DOCUMENT		
TRAITEMENT; CARACTERISTIQUES MECANQUES	ETAT DE SURFACE GENERAL	DESS. PAR Le: M.C	MASSE	ECHELLE
FINITION	PROTECTION	FOLIO		1/1
ATTACHEMENT	MATERIEL	 <a href="http://www.karver-systems.com">www.karver-systems.com</a>		
DESIGNATION	KJ25 Carbon			
CODE PRODUIT <b>K</b>	PRESENTATION	CODE PIECE	FORMAT A3	