

INSTALLATION MANUAL KRE1, 2 and 5

V1.0



KARVER SYSTEMS

Avenue Marcel Liabastre, Zone Industrielle Portuaire, 14600 Honfleur
www.karver-systems.com – contact@karver-systems.com
Tel: +33 (0)2 31 88 37 98 – Fax: +33 (0)2 31 88 56 43

SUMMARY

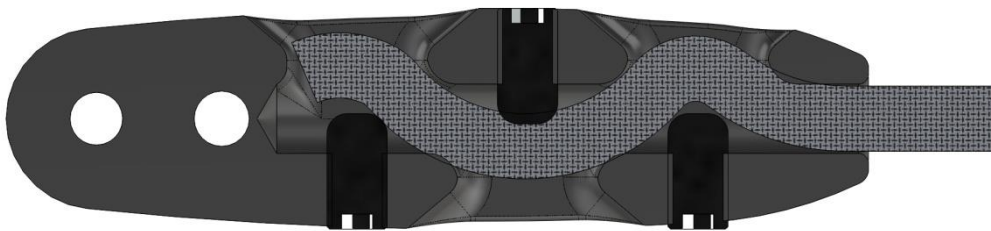
1 Important Information	3
2 Cable set up in the terminal	3
3 Calculate the cable length	5
4 Technical specification	6
5 Maintenance	7

1 Important Information

- KRE terminals are intended to connect the anti-torsion textile cable to the spinnaker furlers, all other uses are not guaranteed by Karver.
- Prohibited to lift a man using this product.
- If a crack appears ; dont use the terminal.
- Visually check rope wear at cable exit.
- Check the tightness of the screws.

2 INSTALLATION

The blocking is based on a principle of baffles



Necessary tools:

Allen Key

Tape

Scissors or cutter



Steps:

1. Fixed one end to the upper terminal:
Unscrew the 3 screws and insert the taped cable into the bottom hole of the termination



Start tightening the screw closest to the two holes until the end of the rope (in red) comes out a few millimetres from the end/



2. Tighten the middle screw as far as it will go without the rope protruding from the opposite side.



3. Do the same for the last screw at the rope entrance.



4. The screws must not protrude from the end, you can tape the end of the rope that protrudes from the end to avoid catching an object:

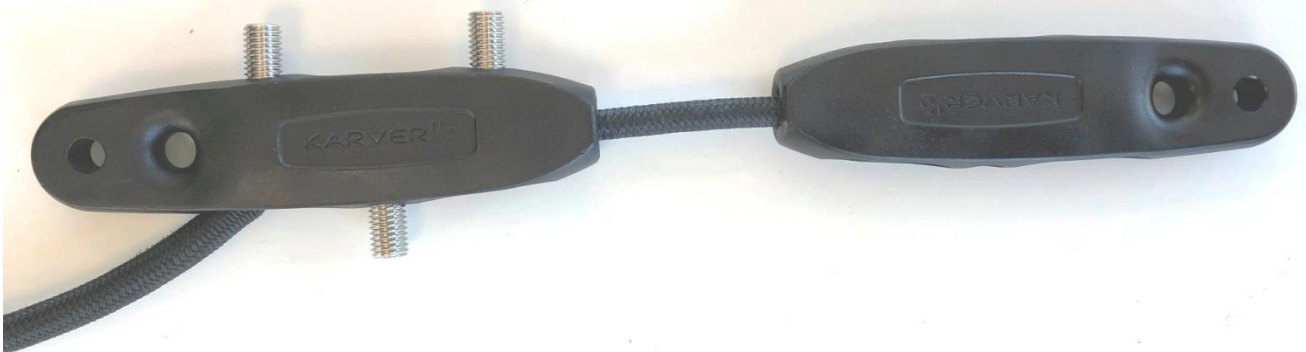


3 CALCULATE THE CABLE LENGTH:

You can determine the length of the anti-twist cable in 2 ways:

Either using the terminal measurement table on page 6 and a decametre,

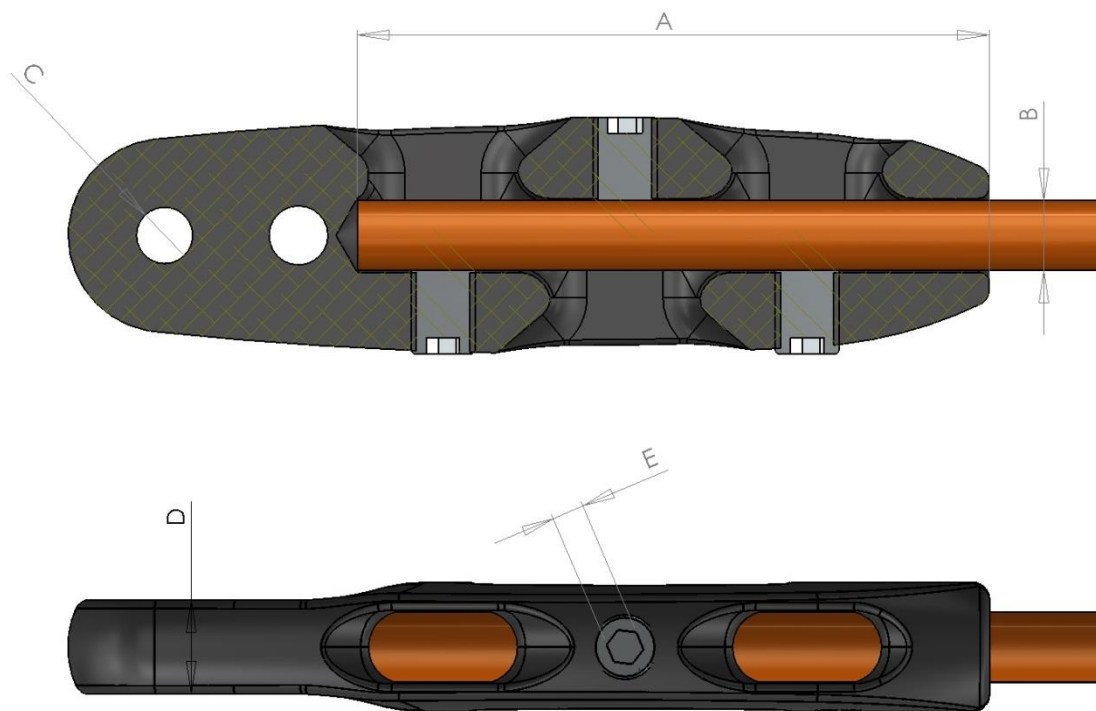
or by physically simulating the installation:



- Hoist the swivel and the top terminal on one end of the anti-torsion cable as far as the mast's top stop. Install the bottom terminal in the furler fork , taking care of unscrewing the 3 studs , and extract the cable by the lower exit, as per photo above.
- Tighten the cable and mark on the end that protrudes, remove the cable from the terminal, cut the cable taking care to remove the necessary clearance to hoist the cable with proper tension (about 10 to 20mm).
- Install the cable in the terminal as per page 4 instruction.

IMPORTANT : Always apply a strong tension in the cable before furling the sail. If the cable is too long, you won't be able to furl properly.

4 TECHNICAL SPECIFICATION



In mm	A	B	C	D	E	Max Load
KRE1	95	9-11	8,5	10,5	5	500Kg
KRE2	118	11-13	10,5	17,4	6	1T
KRE5	129	13-15	12,5	19,4	6	1.5T

5 MAINTENANCE

The body of the Karver clamp comes from a casting in aluminum lost wax, the technology does not allow us to obtain perfectly smooth surfaces.

Check the tightness of the screws before each season of navigation.

Rinse with fresh water as often as possible.

Fair winds

This assembly guide is for your information purposes, do not hesitate to contact your dealer or Karver by phone at +33 (0) 231 883 798 or by email contact@karver-systems.com if you encounter difficulties.

7- SERVICE

If you need advises or services for your furler, please ask first where you bought it. You can also send us an email to : contact@karver-systems.com

We will need the following information :

Your name	
Your nationality	
How we can reach you	
Boat brand, model & name	
Where is based your boat	
Furler model (KSF5 for example)	
Serial number on drum & swivel	
Date of purchase	
Retailer information	

If you wish, you can register your products sending us all those information.



ZONE TECHNIQUE PORTUAIRE – AVENUE MARCEL LIABASTRE – 14 600 HONFLEUR – France

TEL : + 33 (0)2 31 88 37 98 – FAX : +33 (0)2 31 88 56 43 – EMAIL : contact@karver-systems.com

WWW.KARVER-SYSTEMS.COM