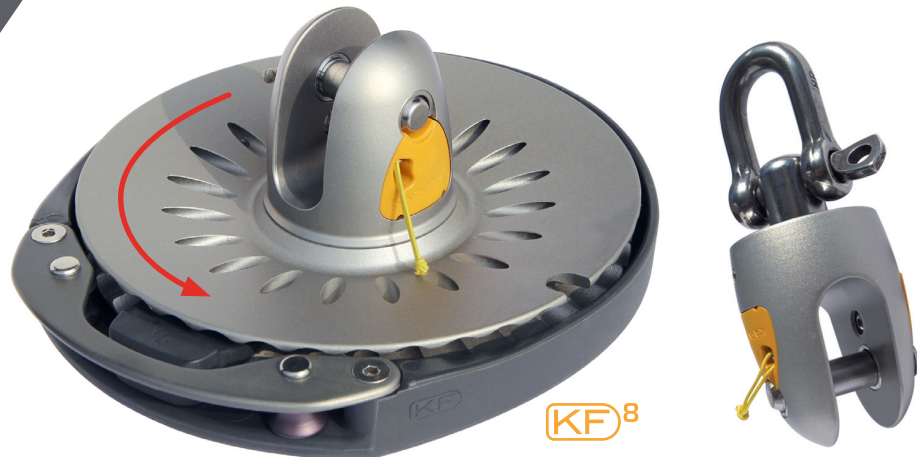




FREE FLYING SAIL FURLER

Gennaker - Code 0 - Staysail
Reacher - Asym spinnaker - etc...



COMPARATIVE ADVANTAGES:

- Automatic (and removable) drum locking mechanism. No requirements to keep the furling line under tension.
- Spare lock.
- Custom bearing = less friction, + load resistance and - weight.
- Most compact and lightest swivel on the market (- weight aloft and - impact).
- Protective storage neoprene bag.

EXCLUSIVE ADVANTAGES:

- Compact system= lighter, and bigger sail area possible.
- A composite spool around the drum to better protect your boat and your system.
- Quick response to any requests: from the simplest to the most complex.
- Strong ties with the racing teams that confirm the quality of our products and their longevity in the most extreme conditions.

Karver innovations that have become standard on the market:

- Easy and quick engagement of the furling line.
- Captive pins.
- The drum is designed to eject the furling line when not under tension (safety & comfort).



The KSF top down furler enables the furling of any type of free flying sail (as you can already do with the KF), in addition you are also able to furl an asymmetric spinnaker. The system is a KF furler, featuring a tack swivel on top of the drum, where the spinnaker tack attaches to. This then means that the spinnaker will now furl from the top downwards, depowering the sail without any effort, from the cockpit, enhancing the safety of this system.



IN THE BOX



Drum with its fitting



Swivel with its fitting



Lock and spare lock



User manual



Storage bag

NOT INCLUDED - FREQUENTLY BOUGHT OPTIONS



2:1 block



Furling line



Thimbles

OTHERS OPTIONS AVAILABLE



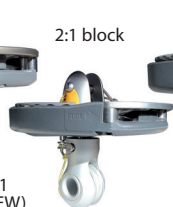
Tylaska



HR 3:1 friction sheave



Quick release 3:1 friction sheave (NEW)



2:1 block



Lashing eye



HR 2:1 friction sheave



KFH Furling lock



Single line drum

PRODUCT LINE

MODEL	SAFE WORKING LOAD (LBS)	TACK SWIVEL WORKING LOAD (LBS)	DRUM DIAMETER (INCH)	DRUM FITTING (1)	SWIVEL FITTING (1)	FORK WIDTH (INCH)	PIN DIAMETER (INCH)	FURLING LINE DIAMETER (INCH)	WEIGHT (OZ) (2)	MAX HEIGHT (INCH) (2&3)	ANTI-TORSION LINE MAX DIAMETER (4)
KF1	3,300	X	4" 3/8	HR Snap Shackle	HR Shackle	7/16"	5/16"	1/4"	20.1	5" 29/32	3/8"
KF2	5,500	X	5" 43/64	HR Snap Shackle	HR Shackle	11/16"	3/8"	5/16"	35.9	7" 41/64	15/32"
KF5	11,000	X	7" 23/64	HR Snap Shackle	HR Shackle	25/32"	15/32"	3/8"	72.3	9" 62/64	5/8"
KF8	17,650	X	8" 5/32	Lashing eye	Lashing eye	15/16"	9/16"	3/8"	87.1	7" 24/64	11/16"
KF10	22,050	X	8" 5/32	Lashing eye	Lashing eye	55/64"	11/16"	3/8"	159.7	7" 54/64	Custom
KF12	26,450	X	8" 5/32	Lashing eye	Lashing eye	55/64"	25/32"	3/8"	123.4	8" 33/64	Custom
KSF1	3,300	1,100	4" 3/8	HR Snap Shackle	HR Shackle	7/16"	5/16"	1/4"	22.9	6" 37/64	3/8"
KSF2	5,500	2,200	5" 43/64	HR Snap Shackle	HR Shackle	11/16"	3/8"	5/16"	42.6	8" 15/16	15/32"
KSF5	11,000	3,300	6" 17/32	HR Snap Shackle	HR Shackle	25/32"	15/32"	3/8"	81.1	10" 7/16	5/8"
KSF8	17,650	6,600	8" 5/32	Lashing eye	Lashing eye	15/16"	9/16"	3/8"	108.6	7" 25/32	11/16"
KSF8 R	17,650	13,200	8" 5/32	Lashing eye	Lashing eye	15/16"	9/16"	3/8"	130.5	7" 25/32	11/16"
KSF10	22,050	13,200	8" 5/32	Lashing eye	Lashing eye	55/64"	11/16"	3/8"	188.3	7" 25/64	Custom
KSF12	26,450	22,050	8" 5/32	Lashing eye	Lashing eye	55/64"	25/32"	3/8"	151.6	8" 25/32	Custom

The sizing in imperial is for convenience only. The metric sizing prevails over imperial sizing.

Over 30T working load or for units over 30m, please contact us.

(1) For each model, the standard fittings refer to the most common installations.

(2) Weight and height of standard model. The change of fitting would modify these data.

(3) Minimum distance to be deducted from the max hoist distance. The change of fitting would modify these data.

(4) Max anti-torsion diameter that can fit in the thimble. Max diameter = better efficiency.

WHICH MODEL TO SELECT?

KF or KSF? The KSF should be selected if you would like to furl your spinnaker in addition to other sails.

BOAT LENGTH		SAILS TO BE FURLED			
METER	FOOT	STAYSAIL	UPWIND STRAIGHT LUFF SAIL	DOWNWIND STRAIGHT LUFF SAIL	ASYM SPINNAKER
< 8	< 25	KF1	KF1	KF1	KSF1
8 - 12	25 - 40	KF2	KF2	KF1	KSF2
12 - 15	40 - 50	KF5	KF5	KF2	KSF5
15 - 20	50 - 65	KF8	KF8	KF5	KSF8 / KSF8R
20 - 25	65 - 80	KF12	KF10	KF10	KSF8R / KSF10
25 - 30	80 - 100	KF12	KF12	KF10	KSF12
> 30	> 100	KF14 to KF40 available upon request			

The choice of the right furler model would depend on:

- The use of one or several sails with the furler
- The length and weight of your boat
- The sail area
- Your sailing program (coastal cruising, blue water cruising, cruiser-racing, racing ...).

Check out our website to find our furler recommendations by boat.

A detailed questionnaire is available to inquire about your next project.

FIND OUT MORE ON OUR WEBSITE

- Find out your furler model by boat.
- Customers who trust us.
- Pictures, specs & advice regarding our complete product lines (furlers, blocks, jammers, halyard lock, full batten systems...).

www.karver-systems.com - Téléphone : + 33 (0)2 31 88 37 98
Email : contact@karver-systems.com