

A NEW FURLER GENERATION FROM KARVER: LEADING THE WAY!

The KF V3 furler range* sums up 18 years of offshore racing and cruising experience.
Now available and optimized in 4 versions:

Standard

Racing

Classic

Structural

NEW
KF V3*



* 3rd generation of Karver furlers.

**A unique combination of Performance,
Reliability, Innovation, Price & Aesthetics.**

Everything is here to ensure that this new furler
quickly becomes the global sailing market benchmark.

 **KARVER**[®]
sailing experience



KarverSailing



karversailing



.com/KarverSailing

WWW.KARVER-SYSTEMS.COM

4 PRE-DEFINED VERSIONS... OR A LA CARTE



Options included for each version	Standard	Racing	Classic	Structural
Carbon and Kevlar® continuous line wheel	✓	✓	✓	✓
Automatic anti-return drum locking mechanism	✓	✓	✓	✓
K Krok swivel protection	✓	✓	✓	✓
K Krok drum protection	✓		✓	✓
3:1 friction sheave with captive fast pin		✓		
K Snap 2-in-1 snap shackle	✓		✓	
Carbon drum		✓		
Natural wood veneer of the continuous line wheel			✓	
Stainless steel fork			✓	✓
Secured & bolted structural pins				✓



Karver is a French company who have been fitting the vast majority of offshore racing yachts (Imocas, Ultims, Class 40, etc.) for over 18 years, as well as cruising and ocean cruising yachts including Super Yachts.

In addition to furlers, we offer hooks, blocks, jammers, winches, tracks & cars mast which match our DNA: **PERFORMANCE - INNOVATION - DESIGN - SERVICE.**



REGISTER YOUR FURLER ON OUR WEBSITE AND ENJOY AN ADDITIONAL YEAR'S WARRANTY

Imoca, Class 40 and Figaro 3 have been testing this new model for several months with significant success. An extra year of warranty is available to you on registration of your furler with our website.



A range of accessories and options to make your furler the lightest, the most compact, the most beautiful, the most innovative, ...

...The choice is yours to make your furler your best team member.

Patented Carbon & Kevlar® continuous line wheel on all models. Aesthetics and efficiency



New, reliable and ergonomic captive fast pins.

"K Krok"
New anti-shock protection on the swivel and the drum.



New sizes in the range: 1.5 - 3.0 - 4.5 - 6.0 - 8.0 - 10 - 12... and up to 50 T.
The right model for the right use at the right price.

Carbon drum as standard on the Racing version or optional on the other models



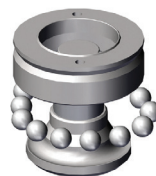
Natural wood veneer on the Classic version (or optional). Also available for carbon drum.

New compact and resistant 2-in-1 "K Snap": a snap shackle + 2:1 friction sheave on the Standard and Classic version. Easy orientation.



Large Drum diameter version available on the KF1.5 and KF3.0. For those who prefer comfort and power over speed. KF 1.5 and KF 3.0.

Automatic locking of the standard continuous line wheel. Removable in seconds without tools. Comfort & safety.



New bearings for less friction.

New design: More robust and easier to service.



Aluminum and stainless steel fork depending on the versions (and optional titanium).

FURLER + SWIVEL ASSEMBLIES CHARACTERISTICS & CODES

	KF0.9	KF1.5	KF1.5 Large	KF3.0	KF3.0 Large	KF4.5	KF6.0	KF8.0	KF10	KF12
SAILBOAT SIZE RECOMMENDATION*	20 - 30'	25 - 35'	25 - 40'	30 - 40'	30 - 45'	40 - 55'	50 - 60'	55 - 65'	60 - 80'	70 - 100'
WORKING LOAD & BREAKING LOAD	0.9 - 1.8 T	1.5 - 3 T	1.5 - 3 T	3 - 6 T	3 - 6 T	4.5 - 9 T	6 - 12 T	8 - 16 T	10 - 20 T	12 - 24 T
CONTINUOUS LINE WHEEL DIAMETER	87	120	160	160	195	195	220	220	220	220
FAST PINS DIAMETER	6	8	8	10	10	12	12	14	18	20
FORK WIDTH	10,2	14,6	14,6	18	18	20	20	24	22,2	22,2
LINE DIAMETER	6	6	8	8	10	10	10	10	10	10
KF STANDARD VERSION	PF350 000	PF300 150	PF300 150 [L]	PF300 300	PF300 300 [L]	PF300 450	PF300 600	PF300 800	PF300 1000	PF300 1200
KFR RACING VERSION	X	PF300 150 [R]	PF300 150 [RL]	PF300 300 [R]	PF300 300 [RL]	PF300 450 [R]	PF300 600 [R]	PF300 800 [R]	PF300 1000 [R]	PF300 1200 [R]
KFC CLASSIC VERSION	X	PF300 150 [C]	X	PF300 300 [C]	X	PF300 450 [C]	PF300 600 [C]	PF300 800 [C]	PF300 1000 [C]	PF300 1200 [C]
KFX STRUCTURAL VERSION	PF350 000 [STRUCT]	PF300 150 [X]	X	PF300 300 [X]	X	PF300 450 [X]	PF300 600 [X]	PF300 800 [X]	PF300 1000 [X]	PF300 1200 [X]

* Recommendation for a genacker. Please contact us for other sails.

OPTIONS CODES

	As standard on...	KF0.9	KF1.5	KF1.5 Large	KF3.0	KF3.0 Large	KF4.5	KF6.0	KF8.0	KF10	KF12
Standard thimble (black) x 1 max anti torsion Ø	1 X	PF355 705 9 mm	PF350 150 11 mm	PF350 150 11 mm	PF350 300 14 mm	PF350 300 14 mm	PF350 450 16 mm	PF350 600 16 mm	PF350 800 18 mm	PF034742[18] 17 mm	PF034742 17 mm
Cableless thimble (tack) x1 For the swivel thimble: replace [D] by [T]	2 X	X	PF106 460 [D]	PF106 460 [D]	PF096461 [D]	PF096461 [D]	PF086462 [D]	PF086462 [D]	PF116463 [D]	PF036460 [18D]	PF036460 [20D]
Ready-to-use line *	3 X	PF101231 [D6L10]	PF101231 [D6L16]	PF091232 [D8L16]	PF091232 [D8L20]	PF081233 [D10L26]	PF081233 [D10L26]	PF081233 [D10L26]	PF081233 [D10L32]	PF081233 [D10L42]	PF081233 [D10L50]
Karver Open Ring / fairlead	4 X	PF102 6738	PF102 6738	PF102 6735	PF102 6735	PF102 6740	PF102 6740	PF102 6740	PF102 6740	PF102 6740	PF102 6740
KTS (Adaptator for asy. spinnaker)	5 X	X	PF340 150	PF340 150	PF340 300	PF340 300	PF340 450	PF340 600	PF340 800	PF340 1000	PF340 1200
Hook KFH (instead of standard swivel) Add [KFH] for a KFH only	6 X	X	PF320 150	PF320 150	PF320 300	PF320 300	PF320 450	PF320 600	PF320 800	PF320 1000	PF320 1200
3:1 friction sheave (instead of K Snap or eye)	7 KFR	X	PF317 150	PF317 150	PF317 300	PF317 300	PF317 450	PF317 600	PF317 800	PF317 1200	PF317 1200
3:1 friction sheave only	8 X	X	PF314 150	PF314 150	PF314 300	PF314 300	PF314 450	PF314 600	PF114 226	PF034 787	PF034 787
Optional 2:1 block (instead of the lashing eye)	9 X	X	PF330 150	PF330 150	PF330 300	PF330 300	PF330 450	PF330 600	PF330 800	PF330 1000	PF330 1200
Single line drum version	10 X	X	PF379 150	X	PF379 300	X	PF379 450	PF379 600	PF379 800	PF379 1000	PF379 1200
Alu swivel only Add [SS] for stainless steel version	11 KF, KFR	X	PF300 152	X	PF300 302	X	PF300 452	PF300 602	PF300 802	PF300 1002	PF300 1202
No drum locking mechanism (credit)	12 X	X	PF382 150 [NO]	PF382 150 [NO]	PF382 150 [NO]	PF382 150 [NO]	PF382 450 [NO]	PF382 450 [NO]	X	X	X
K Snap (instead of 3:1)	13 KF, KFC	X	PF316 150	PF316 150	PF316 300	PF316 300	PF316 450	PF316 600	X	X	X
Carbon drum (instead of ABS)	14 KFR	X	PF380 150	PF380 300	PF380 300	PF380 450	PF380 450	PF380 600	PF380 800	PF380 1000	PF380 1200
ABS drum (instead of carbon)	15 KF, KFC, KFX	X	PF381 150	PF381 300	PF381 300	PF381 450	PF381 450	PF381 800	PF381 800	PF381 800	PF381 800
Wooden veneer of the continuous line wheel	16 KFC	X	PF385 150	PF385 300	PF385 300	PF385 450	PF385 450	PF385 600	PF385 800	PF385 1200	PF385 1200
Wooden veneer of the carbon drum	17 X	X	PF383 150	PF383 300	PF383 300	PF383 450	PF383 450	PF383 800	PF383 800	PF383 800	PF383 800
Stainless steel drum fork (instead of aluminium)	18 KFC, KFX	X	PF384 150	X	PF384 300	X	PF384 450	PF384 600	PF384 800	PF384 1000	PF384 1200

* L12 = 2 x 6 m loop. Other lengths available for each model

