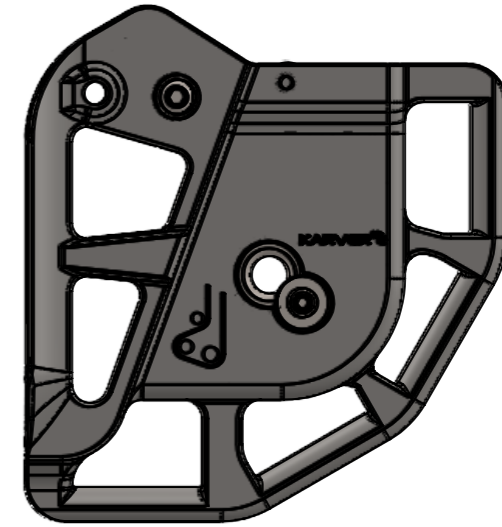
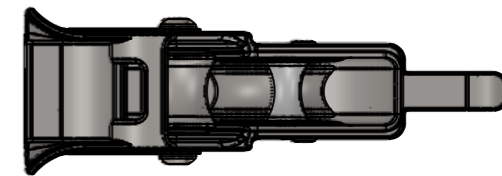
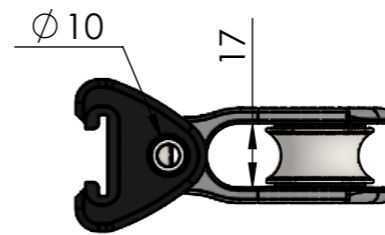
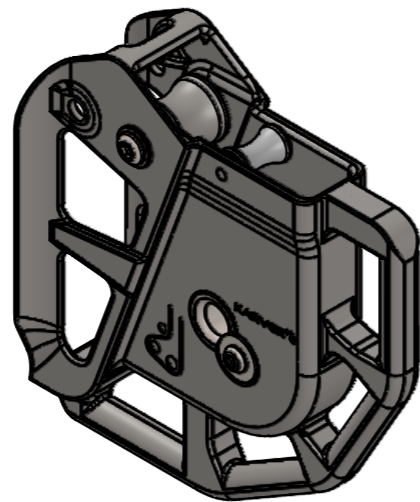
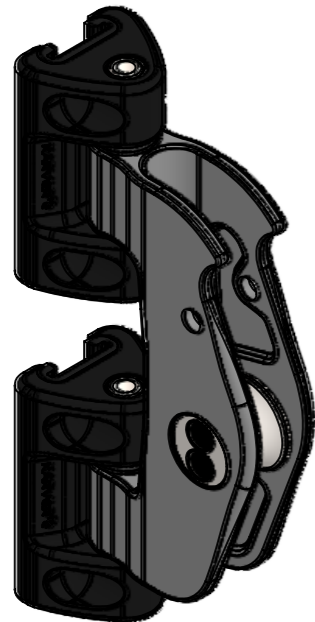


Joiner + chariots  
Masse : 674g



Partie à sangler à la tetière  
Masse : 674g



Désignation: **KGL40 V2 Complet + chariots**

Description:

Maximum Working Load : 2.5t

Charge de travail  
Matière : INOX

Système:

**KMS40**

Breaking Load : 5t

Charge de Rupture

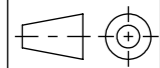
Masse : 1378 (g)

Type Famille

**PF 140 6500**

Code Indice

Plus d'informations sur [www.karver-systems.com](http://www.karver-systems.com) - More information on [www.karver-systems.com](http://www.karver-systems.com).



Echelle	Format	Folio
1:2	A3	1/1



Av. Marcel Liabastre 14600 HONFLEUR  
Tel : 02 31 88 37 98

All rights reserved