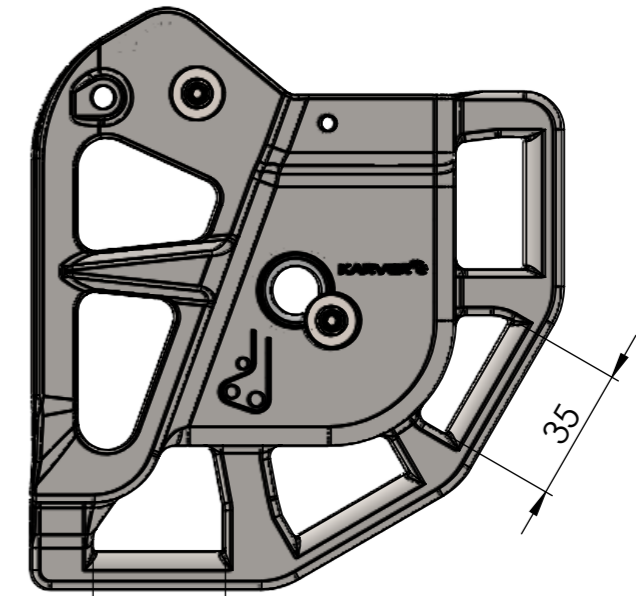
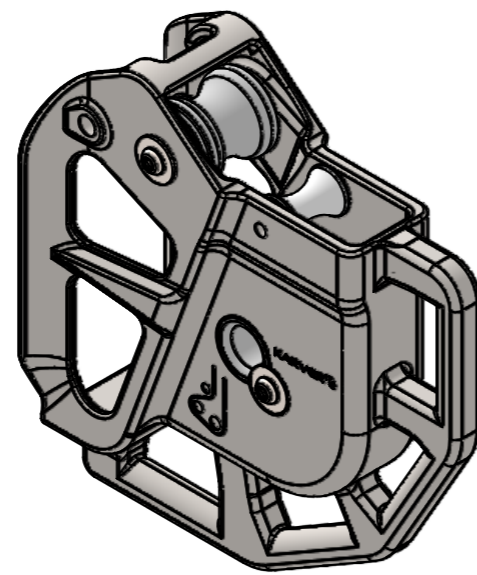
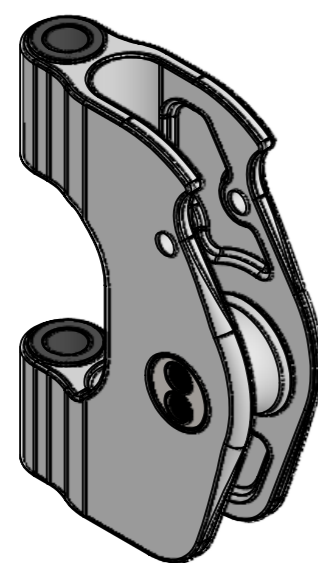
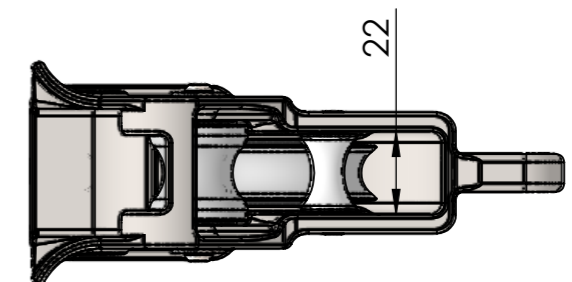
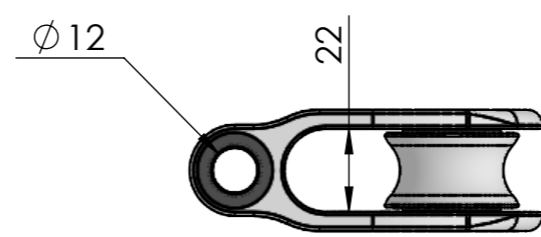



Partie fixée sur les chariots
Masse : 806g



Partie à sangler à la tetière
Masse : 1195g



Désignation: KGL60 V2 complet + chariots		Echelle 1:2	Format A3	Folio 1/1
Description:				
Maximum Working Load : 5T Charge de travail		Breaking Load : 10T Charge de Rupture		
Material : Inox Matière		Masse : 2440 (g)		
Système: KMS60		Type	Famille	Code
				PF 160 6500
Plus d'informations sur www.karver-systems.com - More information on www.karver-systems.com .		 Av. Marcel Liabastre 14600 HONFLEUR Tel : 02 31 88 37 98		
		All rights reserved		